

## Organic Sakura Floral Aromatherapy Fragrance Oil Concentrated Cherry Blossom Essential Oils

Our Product Introduction

for more products please visit us on [fragrances-oil.com](http://fragrances-oil.com)

### Basic Information

- Place of Origin: China,Guangdong
- Brand Name: Plant Fragrance
- Certification: COA,MSDS,IFRA,CE,ISO
- Model Number: LDZ-PL40021
- Minimum Order Quantity: To be negotiated
- Price: 1 - 49 kilograms \$20.00,To be negotiated
- Packaging Details: carton drum packing :5kgs/drum,4 drum/carton,20kgs/carton(41\*28\*33.5cm);Iron drum packing: 25 kg/drum (D: 30cm, H: 45cm)(0.032cbm)
- Delivery Time: 5-8 working days for Trial order; 8-15 working days for OEM order
- Payment Terms: T/T,Western Union,Ali Pay,Paypal;
- Supply Ability: 2000 Kilogram/Kilograms per Day



### Product Specification

- Samples: Freely Provided
- Oem: Welcome
- Appearance: Light Yellow Or Colorless Liquid Oil
- Other Names: Sakura Fragrance/Sakura Fragrance Essence/Sakura Fragrance/Sakura Flavors
- Storage Condition: Cool Dry Place Away From Sunlight
- Shelf Life: 1-3Years (Opened For One Year, Unopened For Three Years)
- Solubility: Oil/ Water Soluble
- Oem Service: Welcome
- Highlight: **Organic Sakura Floral Fragrance oil,  
Organic Sakura Floral Aromatherapy Fragrance Oil  
, Concentrated Cherry Blossom Essential Oils**



### More Images





## Product Description

### Product Description:

Our Aromatherapy Fragrances are designed to elevate your mood and create a more relaxing atmosphere. With a shelf life of 1-3 years (1 year opened, 3 years unopened), you can rely on our Sakura Fragrance to last. Our product is both oil and water soluble, making it versatile and easy to use in a variety of settings.

We welcome OEM orders, so you can customize our Sakura Fragrance to fit your specific needs. And, we even offer samples free of charge, so you can try our Aromatherapy Fragrances before committing to a larger order.

Our Sakura Fragrance is just one of our many offerings in the world of flavor and fragrance. Let us help you find the perfect scent to enhance your environment and create a more peaceful atmosphere.



### Why Choose Us:

#### Raw material advantage

- \*Fresh  
Raw materials are processed quickly from place of origin to factory to ensure freshness.
- \*Nature  
Have cooperative base in raw material the place of origin.
- \*Traceable  
Specially-assigned professional management. Strictly control the quality of raw materials

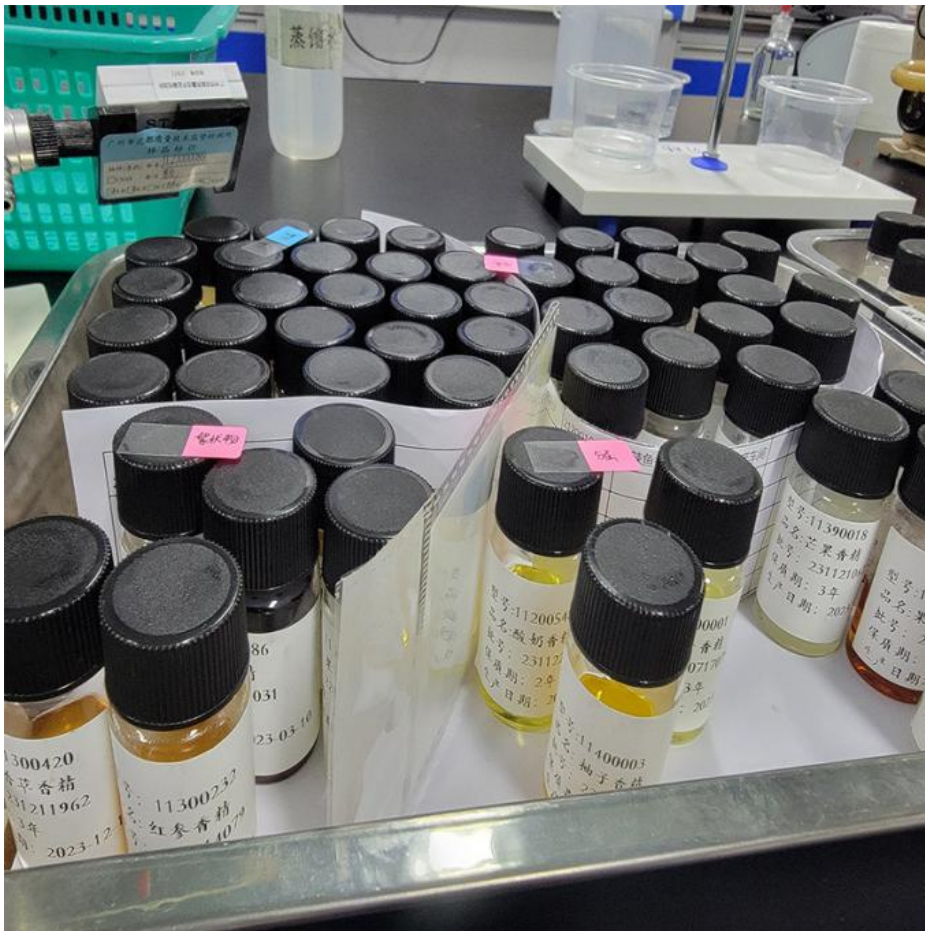
<b>Technology advantage</b>	<p>*Low temperature cycle stage extraction</p> <p>Analyzed the advantages and disadvantages of various extraction methods, combined with the characteristics of raw materials, geographical advantages and equipment output value and other factors, through repeated scientific experiments, finally confirmed that low temperature sub-extraction method has become the bottom extraction technology of all kinds of concentrate.</p> <p>*Break through technical difficulties</p> <p>The extraction process was completed under the condition of low temperature, and the good components were better preserved in the extraction process, which overcame the corruption of the extraction solution and the dissolution of impurities in the traditional extraction process. Breaking through the technical problems of insufficient head fragrance of flower concentrates, turbidity of tea concentrates, obvious bitter and astringent flavour of coffee concentrates, oxidation of citrus concentrates.</p>
<b>Products advantages</b>	<p>* Liquid form, storage at room temperature</p> <p>* Anti-corrosion, anti-oxidation, stability</p> <p>* High level of flavor reproduction</p> <p>* Customized services</p>

### Technical Parameters:

Testing Items	Standard Requirements	Testing Result	Conclusion
<b>Character</b>	yellow liquid, with the aroma of sweet scented Sakura	Qualified	Confirmed
<b>Density</b>	0.9380-0.9500	0.9410	Confirmed
Refractive index (20°C)	1.4800-1.5000	1.4856	Confirmed
Solubility	The 1ml sample is soluble in 3ml volume fraction of 90% ethanol, a clear and transparent liquid	Qualified	Confirmed

### Reference Addition:

product type	peference addition(%)	produce type	reference addtion(%)
perfume	5%-15%	paint	0.05%-0.2%
laundry detergents	0.1%-0.5%	candle	1.2%-3%
shampoo and hair conditioner	0.1%-0.5%	toys	0.1%-0.5%
dish wash	0.1%-0.6%	body wash	0.1%-0.5%
soap type	0.8%-1.5%	air freshener	0.4%-0.8%



### Applications:

**Cherry blossom essential oil LDZ-PL40021** is commonly used as an everyday and floral essential oil for aromatherapy/candle making, and its versatility makes it perfect for a variety of scenarios and occasions. Fragrance is an important aspect of the product, making it ideal for a variety of applications. Aromatherapy essential oils are ideal for use in spas and massage parlors, where they can help create a relaxing and calming environment. The scent of LDZ-PL40021 makes it an ideal product for candle making and aromatherapy, where it can help create a pleasant aroma that helps set the mood for any occasion. **Cherry blossom essential oil has a wide range of applications in daily life and industrial production:**

#### Use in daily life

Aromatherapy: Used in aromatherapy lamps and diffusers to help relieve stress and improve mood.

Skin care products: Added to lotions, creams and bath products for moisturizing and antioxidant effects.

Household cleaning: Used as a spice in natural cleaners to increase the aromatic smell of cleaning products.

Candles and soaps: used as fragrances to add appeal and experience to the product.

#### Application in industrial production

Cosmetics industry: Widely used as a fragrance ingredient in facials, body treatments and perfumes.

Food and drink: Although uncommon, it is sometimes used as a spice in certain foods and drinks.

Detergents and cleaners: Provide fragrance in washing products while also enhancing the user experience.

Fragrance products: Used in air fresheners and indoor sprays to create a pleasant living environment.





### Support and Services:

Our Aromatherapy Fragrances product comes with technical support and services to ensure that our customers have the best experience possible. Our team of experts is available to help with any issues or concerns you may have with your product, including troubleshooting and general maintenance. Additionally, we offer a range of services such as product training, installation, and ongoing support to help you get the most out of your purchase. Contact us today to learn more about our technical support and services.



## Packing and Shipping:

### Product Packaging:

Our fragrance essence oils come in a stable plastic or iron bottle. The bottle is then carefully placed in a sturdy cardboard box with cushioning material to ensure safe delivery to your doorstep.

### Product Shipping:

The product will be shipped via standard ground shipping.

Delivery times may vary depending on the destination.

Shipping fees will vary based on the destination and weight of the package.

Customers will receive a tracking number once the package has been shipped.



**Guangzhou plant fragrance Co., Ltd**



+86-13924190039



plan@662n.com



fragrances-oil.com

No. 1, Keyuan Road, Baiyun District, Guangzhou, Guangdong, 510540, China