

## Long Shelf Life Chrysanthemum Flavors Fragrances oil For Toothpaste Making / Liquid Flavour Concentrate

Our Product Introduction

for more products please visit us on [fragrances-oil.com](http://fragrances-oil.com)

### Basic Information

- Place of Origin: China,Guangdong
- Brand Name: Plant Fragrance
- Certification: COA,MSDS,IFRA,CE,ISO
- Model Number: LDZ-PL90093
- Minimum Order Quantity: To be negotiated
- Price: 1 - 49 kilograms \$20.00,To be negotiated
- Packaging Details: carton drum packing :5kgs/drum,4 drum/carton,20kgs/carton(41\*28\*33.5cm);Iron drum packing: 25 kg/drum (D: 30cm, H: 45cm)(0.032cbm)
- Delivery Time: 5-8 working days for Trial order; 8-15 working days for OEM order
- Payment Terms: T/T,Western Union,Ali Pay,Paypal;
- Supply Ability: 2000 Kilogram/Kilograms per Day



### Product Specification

- Used For: Daily Flavor, Industrial Flavor, Chrysanthemum Flavors For Toothpaste Making
- Product Type: Liquid Flavour Concentrate
- Form: Pale Yellowish /Colorless Liquid Oil
- Storage Way: Cool Dry Place (Store In Cool, Dry Place In Tightly Sealed Containers)
- Other Names: Food Grade Chrysanthemum Essence Flavor
- Application: Toothpaste Flavors, Whitening Floral Toothpaste Flavors , Chrysanthemum Essence Flavor For Teeth Whitening Toothpastes
- Samples: Freely Provided
- Shelf Life: 1-3 Years(Opened For One Year. Unopened)



### More Images





## Product Description

### Product Description:

**Chrysanthemum essential oil (Model Number: LDZ-PL90093)** is a kind of plant essential oil extracted from chrysanthemums. It is famous for its fresh and elegant floral fragrance and rich medicinal value. Chrysanthemum essential oil is an essential oil extracted from chrysanthemums through distillation, extraction and other processes. It retains the unique characteristics of chrysanthemums. Aroma and active ingredients. Its aroma has a light floral and herbal aroma, and the fragrance is soft and non-irritating. It is very suitable for use in toothpaste flavor production, aromatherapy, skin care and many aspects of daily life.

**Aroma characteristics:** The aroma of chrysanthemum essential oil is soft and fresh, with obvious floral and herbal aroma. It is a very soothing aroma. It can make people feel relaxed and tranquil, and is especially suitable for occasions to relieve stress and relax emotions. The fragrance is not strong, suitable for people who like fresh and natural fragrance.

**Antibacterial and anti-inflammatory effects:** Chrysanthemum itself has certain antibacterial and anti-inflammatory properties, which can reduce inflammation and help relieve oral inflammation, sensitivity and other problems. It is an ideal choice for toothpaste production.

**Aromatherapy:** Chrysanthemum essential oil is widely used in aromatherapy and has a calming and relaxing effect. Releasing the aroma of chrysanthemum essential oil through a diffuser or aromatherapy lamp can help relieve stress, improve insomnia symptoms, and create a peaceful, relaxing environment. Its aromatic qualities make it an ideal companion during meditation, yoga, and more.

**Home Fragrances and Fresheners:** Chrysanthemum essential oil can be used in home fragrances, such as scented candles, air fresheners, etc., to add a natural and fresh atmosphere to the home environment, helping to keep the indoor air fresh and non-irritating.



### Why Choose Us?

#### 1. Products advantages

Liquid form, storage at room temperature  
Anti-corrosion, anti-oxidation, stability

High level of flavor reproduction  
Customized services

**2.Raw material advantage**

Fresh:Raw materials are processed quickly from place of origin to factory to ensure freshness.  
Nature:Have cooperative base in raw material the place of origin.  
Traceable:Specially-assigned professional management.Strictly control the quality of raw materials

**3.Technology advantage**

Low temperature cycle stage extraction,analyzed the advantages and disadvantages of various extraction methods, combined with the characteristics of raw materials, geographical advantages and equipment output value and other factors, through repeated scientific experiments, finally confirmed that low temperature sub-extraction method has become the bottom extraction technology of all kinds of concentrate.

**4.Break through technical difficulties**

The extraction process was completed under the condition of low temperature, and the good components were better preserved in the extraction process, which overcame the corruption of the extraction solution and the dissolution of impurities in the traditional extraction process. Breaking through the technical problems of insufficient head fragrance of flower concentrates, turbidity of tea concentrates, obvious bitter and astringent flavour of coffee concentrates, oxidation of citrus concentrates.



**Technical Parameters:**

| Testing Items           | Standard Requirements   | Testing Result | Conclusion |
|-------------------------|---|----------------|------------|
| Character               | yellow liquid, with the aroma of sweet scented chrysanthemum                                    | Qualified      | Confirmed  |
| Density                 | 0.9380-0.9500   | 0.9410         | Confirmed  |
| Refractive index (20°C) | 1.4800-1.5000   | 1.4856         | Confirmed  |
| Solubility              | The 1ml sample is soluble in 3ml volume fraction of 90% ethanol, a clear and transparent liquid | Qualified      | Confirmed  |

**Reference Addition:**

|              |                       |              |                       |
|--------------|-----------------------|--------------|-----------------------|
| product type | peference addition(%) | produce type | reference addition(%) |
|--------------|-----------------------|--------------|-----------------------|

|                              |           |               |            |
|------------------------------|-----------|---------------|------------|
| perfume                      | 5%-15%    | paint         | 0.05%-0.2% |
| laundry detergents           | 0.1%-0.5% | candle        | 1.2%-3%    |
| shampoo and hair conditioner | 0.1%-0.5% | toys          | 0.1%-0.5%  |
| dish wash                    | 0.1%-0.6% | body wash     | 0.1%-0.5%  |
| soap type                    | 0.8%-1.5% | air freshener | 0.4%-0.8%  |



### Applications:

Chrysanthemum essential oil LDZ-PL90093 has a wide range of aromatherapy uses and can be used in a variety of occasions and scenarios. **Here are some examples:**

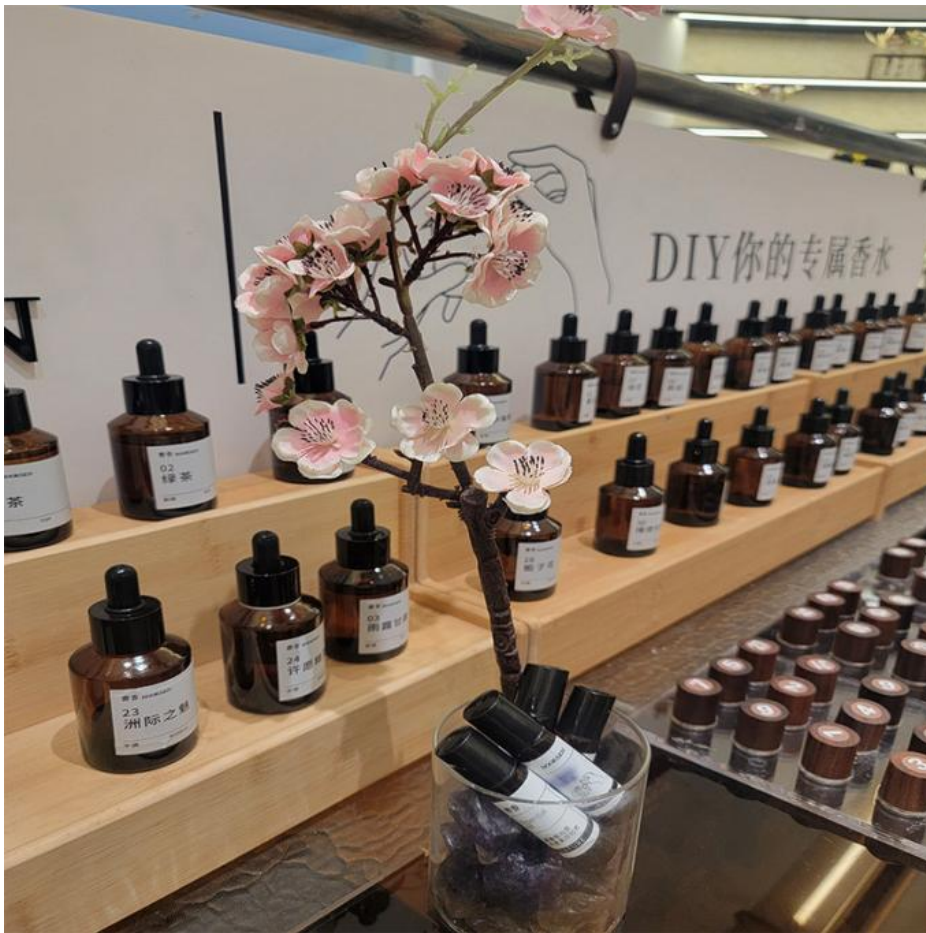
**Personal Care Products:** Chrysanthemum essential oil LDZ-PL90093 can be used to create a unique scent for personal care products such as shower gel, shampoo, and soap. Chrysanthemum essence smells fresh and soothing, making it a great aromatherapy essential oil.

**Aromatherapy:** Chrysanthemum essential oil LDZ-PL90093 can be used as an aromatherapy essential oil to create a relaxing and refreshing environment. Its sweet floral scent helps relieve anxiety, depression, and stress.

**Home Fragrance:** Chrysanthemum essential oil LDZ-PL90093 can be used to create a pleasant aroma for your home. Its sweet floral scent can be used in diffusers, candles, and air fresheners.

**Dental Products:** Chrysanthemum essential oil LDZ-PL90093 is perfect for creating a chrysanthemum flavor for toothpaste making. Its sweet floral scent helps freshen breath and promote oral hygiene.





### Support and Services:

Our Aromatherapy Fragrances come with comprehensive product technical support and services to ensure that you get the most out of your purchase. Our team of experts is available to help you with any questions or concerns you may have about the product, including:

[Instructions for use and maintenance](#)

[Troubleshooting common issues](#)

[Product compatibility with other devices or systems](#)

[Warranty information and claims](#)

[Refund and return policies](#)

We strive to provide excellent customer service and support, and are committed to helping you have a positive experience with our Aromatherapy Fragrances. Please don't hesitate to contact us if you need assistance.



### **Packing and Shipping:**

#### **Product Packaging:**

Natural Chrysanthemum Oil will be packaged in iron and plastic buckets.

The buckets will be securely sealed to prevent any leakage during shipping.

The buckets will be placed in small cardboard boxes with protective padding to prevent any damage during shipping.

#### **Shipping:**

We offer free standard shipping for all orders within the United States.

International shipping costs will vary depending on the destination and will be calculated at checkout.

We use reputable shipping companies to ensure timely delivery and provide tracking information for all orders.



**Guangzhou plant fragrance Co., Ltd**



+86-13924190039



plan@662n.com



fragrances-oil.com

No. 1, Keyuan Road, Baiyun District, Guangzhou, Guangdong, 510540, China