



## Super Red Classic Fragrance Concentrated Essence Oil For Long Lasting Perfume Making

### Our Product Introduction

for more products please visit us on [fragrances-oil.com](http://fragrances-oil.com)

#### Basic Information

- Place of Origin: China,Guangdong
- Brand Name: Plant Fragrance
- Certification: COA,MSDS,IFRA,CE,ISO
- Model Number: LDZ-PL30020
- Minimum Order Quantity: To be negotiated
- Price: 1 - 49 kilograms \$20.00,To be negotiated
- Packaging Details: carton drum packing :5kgs/drum,4 drum/carton,20kgs/carton(41\*28\*33.5cm);Iron drum packing: 25 kg/drum (D: 30cm, H: 45cm)(0.032cbm)
- Delivery Time: 5-8 working days for Trial order; 8-15 working days for OEM order
- Payment Terms: T/T,Western Union,Ali Pay,Paypal;
- Supply Ability: 2000 Kilogram/Kilograms per Day



#### Product Specification

- Fragrance Type: Perfume Oil
- Storage Condition: Cool And Dry Place
- Concentration: High Concentration
- Solubility: Oil/ Water Soluble
- Shelf Life: 1-3 Years(Opened For One Year, Unopened For Three Years/Store In Cool, Dry Place In Tightly Sealed Containers)
- Application: Daily Flavor, Industrial Flavor, Papaya Fragrance Oil For Perfume Making
- Form: Light Yellow Or Colourless Liquid Oil
- Sample: Freely Provide, Each 2 ML,Please Contact Us For Sample Details
- Highlight: **Long Lasting Perfume Making Essence Oil, Super Red Classic Essence Oil,**



#### More Images





## Product Description

### Product Description:

One of the best things about this Fragrance Oil is that it can be used in a variety of ways. You can use it to create your own signature scent by mixing it with other oils and ingredients, or you can add it to your favorite lotion or body wash for an added fragrance boost.

Another great thing about this Perfume Oil is that it has a long shelf life. When opened, it can last up to a year, while unopened it can last up to three years. To ensure that it lasts as long as possible, it is recommended that you store it in a cool and dry place in tightly sealed containers.

The Super Red Classic Fragrance/Super Red Classic Fragrance Essence is oil and water-soluble, making it easy to use in a variety of applications. Its high concentration also means that a little goes a long way, so you don't have to use a lot to get a strong scent.

Overall, if you're looking for a high-quality Fragrance Oil that can be used in a variety of ways and has a long shelf life, this Perfume Fragrance Essence is definitely worth considering. With its strong scent and versatile nature, it's sure to become a staple in your fragrance collection.



### Technical Parameters:

Testing Items	Standard Requirements	Testing Result	Single Conclusion
Appearance	Pale yellowish clear liquid.	Qualified	Conformed
Scent	with the aroma of sweet perfume	Qualifiod	Conformed
Density	0.848-0.880	0.856	Conformed
optical Rotation	-5--18°	-2.4°	Conformed

Refractive Index	1.452-1.470	1.462	Conformed
Freezing point	16-23.5	17	Conformed
Ester value	7-24	14	Conformed
Geraniol content	30-42%	35.2%	Conformed



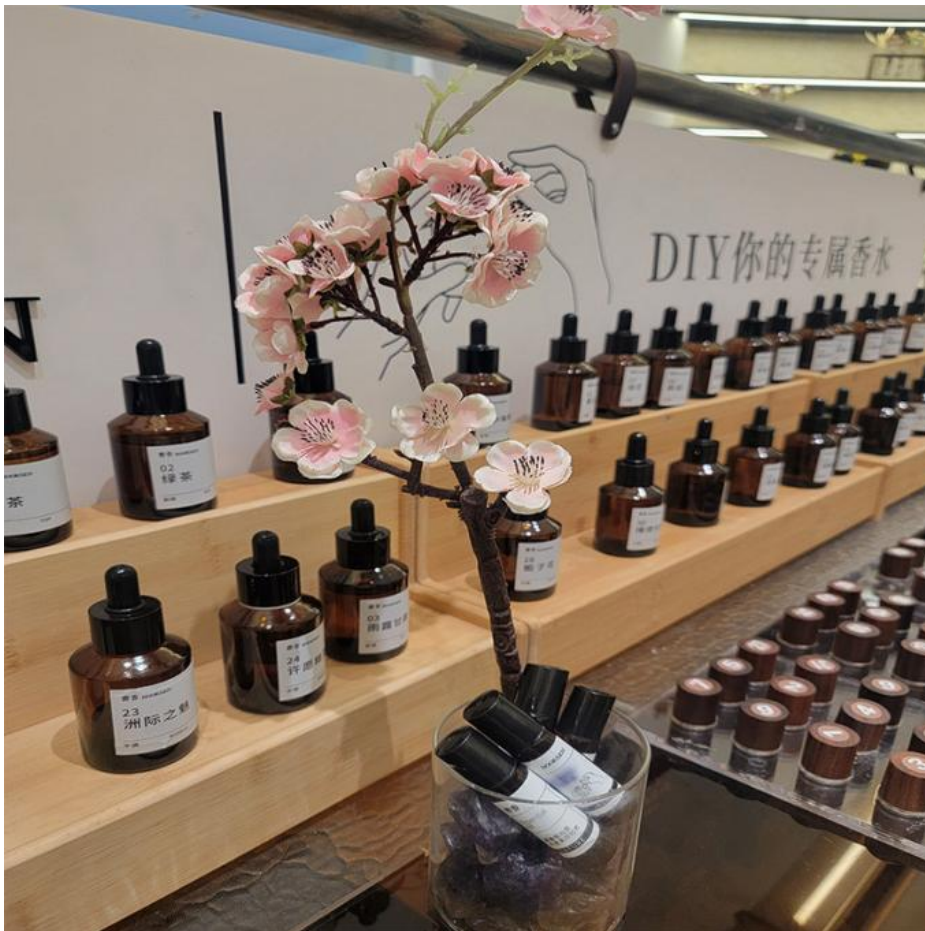
### Applications:

Plant Fragrance LDZ-PL30020 is a high-quality Perfume Fragrance Oil that can be used in a variety of applications. This Scented Essential Oil is made in Guangdong, China, and comes with certifications from COA, MSDS, IFRA, CE, and ISO. It is available for purchase in a minimum order quantity that can be negotiated, as well as a price of \$20.00 for 1-49 kilograms, which can also be negotiated.

The Plant Fragrance LDZ-PL30020 Perfume Fragrance Oil is a highly concentrated fragrance that is perfect for use in a variety of scenarios. It can be used in home fragrance products such as candles, diffusers, and room sprays. It is also an excellent choice for use in personal care products such as perfumes, lotions, and soaps. This Perfume Fragrance Essence can also be used in a variety of industrial applications, such as in cleaning products and air fresheners.

When it comes to storage, it is important to keep this Perfume Fragrance Oil in a cool and dry place to ensure its longevity. The Plant Fragrance LDZ-PL30020 Perfume Fragrance Oil is both oil and water-soluble, making it easy to use in a variety of applications. The high concentration of this fragrance ensures that a little goes a long way, making it a cost-effective choice for any application.

With a supply ability of 2000 Kilogram/Kilograms per day, the Plant Fragrance LDZ-PL30020 Perfume Fragrance Oil is an excellent choice for any business looking for a high-quality fragrance oil. Whether it's for personal use or industrial applications, this Perfume Fragrance Essence is sure to impress.



### Customization:

The quality of our company's products is consistent with that of the top 4 international flavor companies. Our company is very competitive among Chinese flavor companies. In addition to ordinary flavors and fragrances, our imitation fragrance technology is also greatly affirmed, and the number of imitation fragrances is also the most complete. Our products have been sold to more than 80 countries.

\* We can imitate everything you want, our advantages are very clear. Please believe us.

\* We shape 100% concentrate cosmetic fragrance oil with the highest levels of creativity, performance and naturality to bring the most memorable moments to caring, cleaning and perfuming, sustainably.

"Fragrances bring another layer to Life, they enhance every day's experience"

Excellent fragrance retention effects, reduce the volatilization speed of fragrance, and prolong the time of fragrance retention by 2-2.5 times

Increases the strength of fragrance, making the fragrance long-lasting and retain for a long time

Small usage, 20-30% of the fragrance, saving the costs

Almost colorless and odorless, will not affect the original color and smell of the fragrance

High solubility with oil-soluble and water-soluble, suitable for all kinds of fragrances and perfumes

### About Product Customization Services:

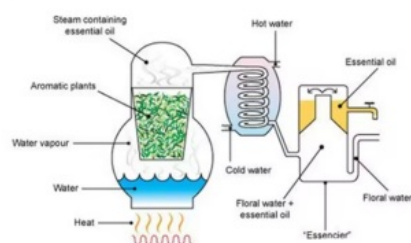
Customize your own Home Fragrance Scented for a relaxing and refreshing atmosphere.

Create your own Aromatherapy Fragrances for a calming and uplifting effect.

Personalize your Home Fragrance Scented with a unique scent that suits your preference.

For perfume fragrance oils, we offer OEM support for creating your own signature scent or replicating popular perfumes, ensuring your chosen fragrance stays with you wherever you go.

### Our Factory Steam Distillation





## Support and Services:

Our Fragrance Oils are carefully crafted and tested to ensure the highest quality and customer satisfaction. We offer technical support and services to assist our customers with any questions or concerns they may have regarding the use or application of our products. Our team of experts can provide guidance on the proper usage, storage, and handling of our fragrance oils to ensure optimal results. Additionally, we offer customization services to tailor our products to meet our customers' specific needs and preferences. Contact us for more information on our technical support and services.



## Packing and Shipping:

### Product Packaging:

Our fragrance essence oils come in a stable plastic or iron bottle. The bottle is then carefully placed in a sturdy cardboard box with cushioning material to ensure safe delivery to your doorstep.

### Product Shipping:

We offer fast and reliable shipping for our fragrances oil. All orders are carefully packaged to ensure safe delivery. Shipping is available to most countries worldwide, and delivery times may vary depending on location. Customers will receive a tracking number to monitor their package's status.



**Guangzhou plant fragrance Co., Ltd**



+86-13924190039



plan@662n.com



fragrances-oil.com

No. 1, Keyuan Road, Baiyun District, Guangzhou, Guangdong, 510540, China