

## Hot Sale Fragrance Watermelon Essence Fragrance Oil High Concentrate For Hair Shampoo Making

### Our Product Introduction

for more products please visit us on [fragrances-oil.com](http://fragrances-oil.com)

#### Basic Information

- Place of Origin: China,Guangdong
- Brand Name: Plant Fragrance
- Certification: COA,MSDS,IFRA,CE,ISO
- Model Number: LDZ-PL20135
- Minimum Order Quantity: To be negotiated
- Price: 1 - 49 kilograms \$20.00,To be negotiated
- Packaging Details: carton drum packing :5kgs/drum,4 drum/carton,20kgs/carton(41\*28\*33.5cm);Iron drum packing: 25 kg/drum (D: 30cm, H: 45cm)(0.032cbm)
- Delivery Time: 5-8 working days for Trial order 8-15 working days for OEM order
- Payment Terms: T/T,Western Union,Ali Pay,Paypal;
- Supply Ability: 2000 Kilogram/Kilograms per Day



#### Product Specification

- OEM Service: Welcome
- Samples: Freely Provided
- Storage Condition: Cool Dry Place (Store In Cool, Dry Place In Tightly Sealed Containers)
- Add Ratio: 0.1%-0.5%
- Form: Light Yellow Or Colourless Liquid
- Usage: Daily Flavor, Industrial Flavor, Watermelon Essence For Shampoo Making
- Odor: With The Aroma Of Sweet Scented Like Watermelon Essence
- Other Names: Watermelon Essence
- Highlight: **Watermelon Essence Fragrance Oil, High Concentrate Fragrance Oil, Hair Shampoo Making Fragrance Oil**



#### More Images





## Product Description

### Product Description:

Our Watermelon Essence Shampoo scent is a richly scented fragrance designed to give your hair a fresh and pleasant scent. It is perfect for those who want to enjoy a refreshing watermelon scent every time they wash their hair.

Plant-scented shampoo is also perfect for those who enjoy using essential oils. Its sweet scent will keep you smelling great all day long and the essential oils will nourish your hair, leaving it looking shiny and healthy.

In terms of storage, it is important to store this fragrance in a cool, dry place in an airtight container. This will help preserve the scent and ensure it stays fresh and effective for as long as possible.

In addition to our Watermelon Essence Shampoo scent, we also offer a variety of other scent options including body oil scents and other scented fragrances. We also offer an OEM service, so if you would like to create a custom fragrance for your brand, we would be happy to work with you to create the perfect scent.



### Features:

#### 1. Suitable for daily use, gentle and comfortable

The fragrance of watermelon shampoo essence is fresh and not strong, which is very suitable for daily use. Its soft fragrance will not irritate the skin or scalp, providing a mild fragrance experience, suitable for consumers of all hair types and sensitive skin types, making the shampooing process more comfortable.

#### 2. Natural and refreshing fruity notes increase market appeal

The watermelon fragrance is natural and fresh, which can add a unique fruity experience to shampoo products. Compared with traditional floral or herbal fragrances, it has more youthful and energetic characteristics, which can attract consumers who like fresh and fruity products.

#### 3. High stability, suitable for large-scale production

Watermelon shampoo essence is highly stable under various production and storage conditions, can maintain the integrity of the fragrance for a long time, and is suitable for large-scale industrial production. Whether in high or low temperature environments, its fragrance will not change, ensuring that each bottle of product can maintain a consistent fragrance effect.

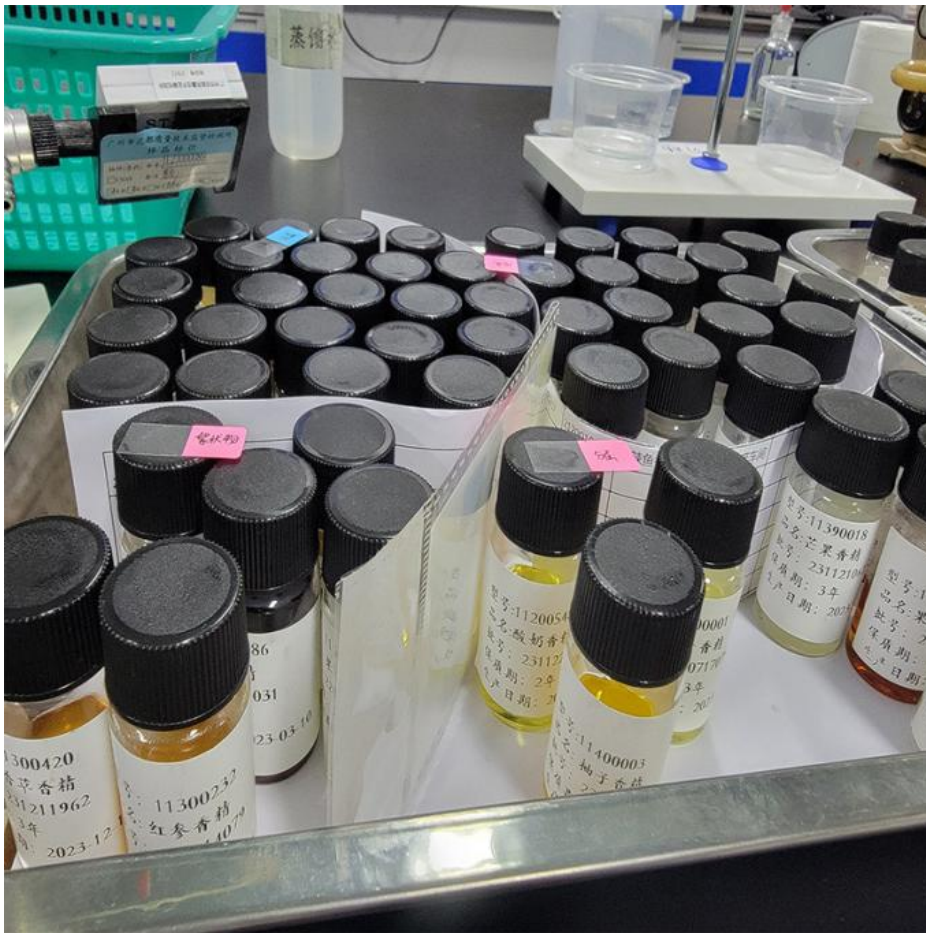
#### 4. Suitable for a variety of hair types, comprehensive care

The refreshing fruity scent of the watermelon shampoo essence is perfectly combined with the care ingredients of the shampoo, suitable for all hair types. Whether it is oily hair, dry hair or normal hair, the watermelon essence can complement the shampoo ingredients, provide a comfortable aroma experience and help keep the hair fresh.



#### Technical Parameters:

Testing Items	Standard Requirements	Testing Result	Single Conclusion
Color and Appearance	Colorless or Pale Yellow Liquid	Qualified	Confirmed
Scent	With Aroma Of Sweet Scented Like Watermelon Essence	Qualified	Confirmed
Density	0.876-0.875	0.891	Confirmed
Optical Rotation	-12.0°— -0.6°	-9.6°	Confirmed
Refractive Index(20°C)	1.4570-1.4640	1.4611	Confirmed
Solubility(20°C)	Add 1 Volume Sample to 3 Volume of Ethanol 70%(V/V),Obtaining a Settled Solution	Qualified	Confirmed
Acid Value	≤1.2	0.49	Confirmed
Camphor Content	≤1.5%	0.1%	Confirmed
Linalyl Acetate Content	25-47%	30%	Confirmed
Linalool Content	20-43%	21%	Confirmed



### Applications:

Watermelon shampoo fragrance is widely used in industrial production. With its fresh and long-lasting fruity aroma, it has become an indispensable and important ingredient in personal care products. During the production process, watermelon fragrance has a high degree of stability and can maintain the consistency of fragrance under different temperature, humidity and storage conditions, ensuring the quality of the final product. Its rapid solubility allows the fragrance to blend seamlessly with other shampoo ingredients, ensuring that the fragrance is evenly distributed without affecting the texture or functional ingredients of the shampoo.

In addition, the low volatility of watermelon shampoo fragrance allows the fragrance to be released for a long time during the production process, greatly reducing the use of fragrances and reducing production costs. Its mild formula is suitable for all hair types, can meet the needs of different consumers, and meets the requirements of modern consumers for natural, healthy and environmentally friendly products, ensuring that products such as shampoo are more attractive in the market.





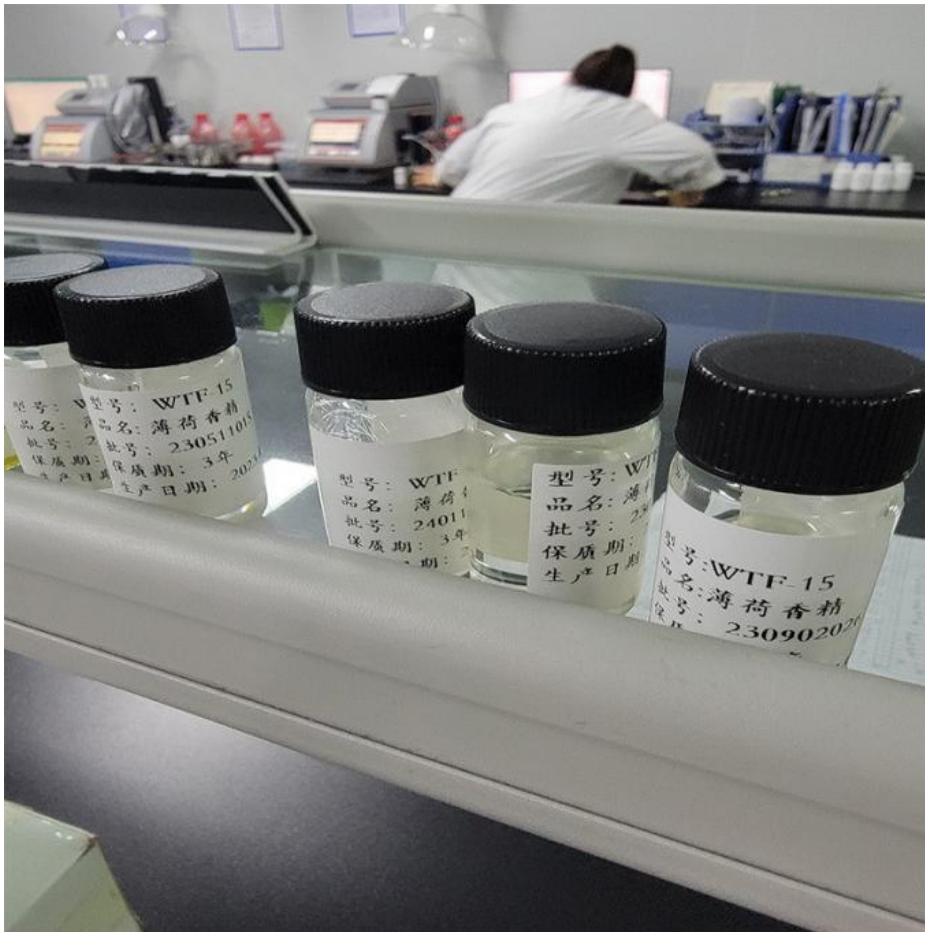
#### Customization:

Our high-quality product has a shelf life of 1-3 years and comes with the advantage of 20 years of manufacturing experience. It is suitable for use in a range of perfume products and is commonly referred to as Perfume Fragrance Oil. We support OEM customization, including logo, product volume net content, product packaging, and a variety of fragrances to choose from.



### Support and Services:

Our professional team will sincerely help you in choosing the fitted scent candle for you business or home.  
We not only offer you our quality products, but also perfect solution.  
24 hours online service will solve your urgent request.  
Professional salesmen will give you an overall patient and careful service.  
Shorter production period with high quality products, and low damage rate.  
Our technical R&D department researches and designers will offer you satisfied OEM and ODM service.



 **Guangzhou plant fragrance Co., Ltd**

 +86-13924190039     plan@662n.com     fragrances-oil.com

No. 1, Keyuan Road, Baiyun District, Guangzhou, Guangdong, 510540, China