



Concentrate Yellow Pine Essence Fragrance Liquid Skincare Oil

Our Product Introduction

for more products please visit us on fragrances-oil.com

Basic Information

- Place of Origin: China,Guangdong
- Brand Name: Plant Fragrance
- Certification: COA,MSDS,IFRA,CE,ISO
- Model Number: LDZ-PL80036
- Minimum Order Quantity: To be negotiated
- Price: 1 - 49 kilograms \$20.00 To be negotiated
- Packaging Details: carton drum packing :5 kgs/drum,4 drum/carton,20kgs/carton(41*28*33.5cm); Iron drum packing: 25 kg / drum (D: 30cm, H: 45cm)(0.032cbm)
- Delivery Time: 5-8 working days for Trial order; 8-15 working days for OEM order
- Payment Terms: T/T,Western Union,Ali Pay,Paypal;
- Supply Ability: 2000 Kilogram/Kilograms per Day



Product Specification

- Form: Concentrate Yellow Pine Essence Fragrance Liquid
- Shelf Life: 1-3 Years(Opened For One Year, Unopened For Three Years/Store In Cool, Dry Place In Tightly Sealed Containers)
- Packing: Plastic Or Iron Barrel
- Color: Light Yellow Or Colourless
- Other Names: Yellow Pine Essence
- Storage Condition: Store In Cool, Dry Place In Tightly Sealed Containers
- Used For: Daily Flavor/Industrial Flavors For Skincare Product Making
- Odor: With The Aroma Of Yellow Pine Essence
- Highlight: **Yellow Pine Essence Fragrance Liquid,**



More Images





Product Description

Product Description:

Yellow Pine Fragrance is a natural fragrance inspired by tall pine trees such as yellow pine that grow in northern forests. With the fresh aroma of pine as the core, it combines the scent of natural wood, resin and herbs to show a fresh, pure and slightly rough aroma. Yellow pine fragrance seems to lead you into a vast forest, feel the breath and power of nature, and give people a deep, refreshing and peaceful breath.

The top note of the fragrance is composed of fresh citrus and herbal notes, bringing a cool feeling, like the morning air in the forest; the middle note shows the aroma of yellow pine, with the warmth and freshness of wood, giving people a natural and pure feeling; the base note is the scent of resin and vetiver, adding a sense of stability and depth, making the whole fragrance more lasting and rich in layers. Yellow pine fragrance is suitable for those who love nature and like fresh woody fragrances, especially for consumers who like the atmosphere of nature. It can bring a fresh forest scent while providing users with a sense of calm and relaxation. It is suitable for daily use or special occasions to show personality and natural temperament.

Features:

Top Notes

Fragrance characteristics: citrus, bergamot, herbal fragrance.

Sensory experience: The citrus and bergamot in the top notes bring a refreshing sweet and sour feeling, and the addition of herbal fragrance makes the whole fragrance more natural and cool, just like the breath of fresh air in the forest in the morning, which makes people relax instantly.

Heart Notes

Fragrance characteristics: yellow pine, cedar, vetiver.

Sensory experience: The fragrance of yellow pine is the core of this fragrance, which is fresh and slightly woody, giving people a sense of purity of nature. The addition of cedar and vetiver makes the woody fragrance of the middle note fuller, presenting a warm and tough breath.

Base Notes

Fragrance characteristics: resin, amber, musk.

Sensory experience: The resin fragrance of the base note adds depth and persistence to the fragrance, while amber and musk give the fragrance a warm and rounded feeling, bringing a deep and quiet feeling, making the overall fragrance more balanced and lasting.



Technical Parameters:

Testing Items	Standard Requirements	Testing Result	Conclusion
Character	yellow liquid, with the aroma of Yellow Pine Essence	Qualified	Confirmed
Density	0.9380-0.9500	0.9410	Confirmed
Refractive index (20°C)	1.4800-1.5000	1.4856	Confirmed
Solubility	The ml sample is soluble in 3ml volume fraction of 90% ethanol, a clear and transparent liquid	Qualified	Confirmed



Applications:

1. Natural and fresh scent

The scent of yellow pine essence is full of natural woody notes, especially the fresh scent of yellow pine wood, making it an ideal choice for those who love nature and forest scents. The scent is pure and fresh, as if you are in a vast forest, bringing a sense of peace and relaxation to the soul.

2. Multi-layered aroma structure

The scent transitions from fresh citrus notes to warm woody yellow pine notes, and then to the deep notes of resin and musk in the base notes. Each layer of fragrance is carefully designed to bring a rich and three-dimensional olfactory experience, making the fragrance both fresh and lasting.

3. Suitable for nature lovers

Yellow pine essence is especially suitable for consumers who like forest, wood or natural scents. It has a primitive and unpretentious natural scent, suitable for those who like simple and pure smells.

4. Enhance natural temperament

This fragrance can help users show a natural and fresh personality. It is not strong, but has a tough and warm woody feel, suitable for daily wear, and also suitable for showing low-key and deep personal charm.

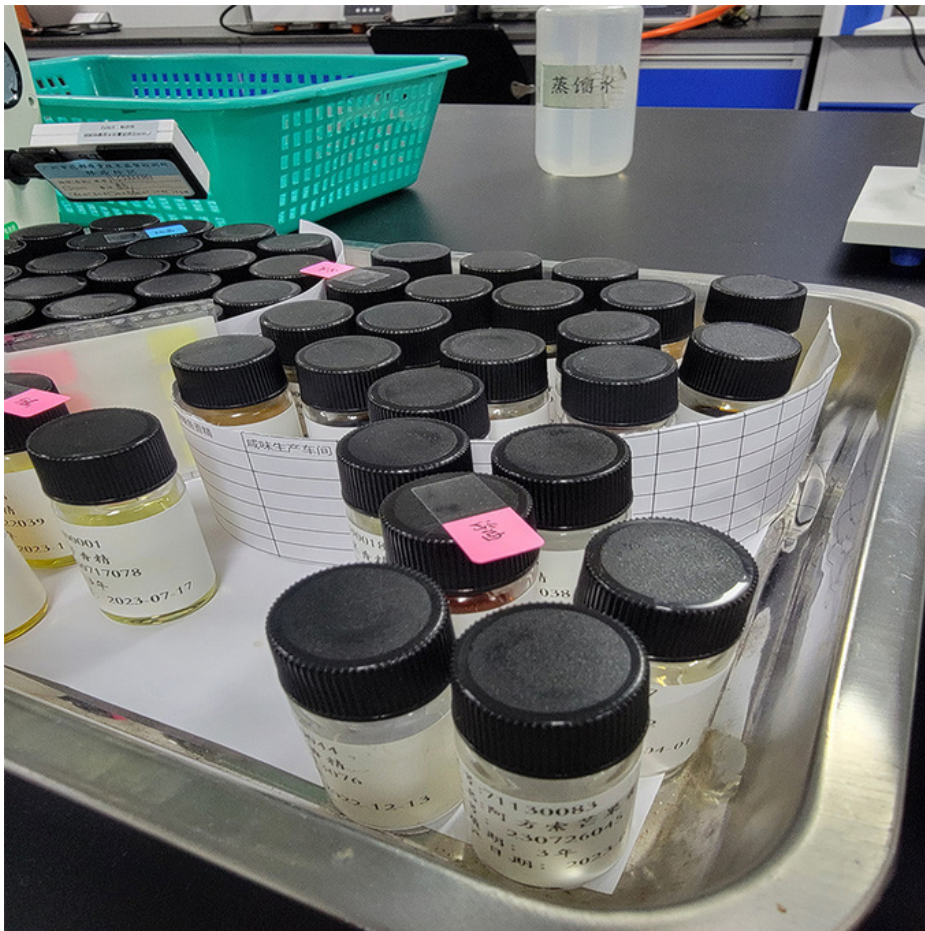
5. Long-lasting and deep

The base notes of the fragrance use resin and musk ingredients, making the fragrance more long-lasting and deep. Even after long-term use, the fragrance can still maintain a balance of warmth and freshness, bringing you a whole day of comfort.



Support and Services:

Our Blending Essential Oils product comes with technical support and services to ensure that our customers can use the product to its fullest potential. Our team of experts is available to answer any questions and provide guidance on how to blend the oils to achieve the desired results. In addition, we offer training sessions and workshops to help our customers learn how to use the product effectively. Our technical support and services are designed to ensure that our customers are satisfied with their purchase and can use the product with confidence.



Packing and Shipping:

Product Packaging:

The blending essential oils will be carefully packed in a 10ml amber glass bottle to protect the oils from sunlight and preserve their quality.

The bottle will have a dropper cap to easily dispense the oils and prevent wastage.

The bottle will be labeled with the product name, ingredients, and instructions for use.

Shipping:

The blending essential oils will be shipped in a sturdy cardboard box to prevent damage during transit.

The box will be labeled with the recipient's address, our return address, and the contents of the package.

The package will be shipped via a trusted courier service with tracking information provided to the recipient.

We will ensure that the package is delivered to the recipient in a timely manner.



Guangzhou plant fragrance Co., Ltd



+86-13924190039



plan@662n.com



fragrances-oil.com

No. 1, Keyuan Road, Baiyun District, Guangzhou, Guangdong, 510540, China