

Cherry Blossom Fragrance For Skin Care Floral Essential Oil

Our Product Introduction

for more products please visit us on fragrances-oil.com

Basic Information

- Place of Origin: China,Guangdong
- Brand Name: Plant Fragrance
- Certification: COA,MSDS,IFRA,CE,ISO
- Model Number: LDZ-PL80006
- Minimum Order Quantity: To be negotiated
- Price: 1 - 49 kilograms \$20.00 To be negotiated
- Packaging Details: carton drum packing :5kgs/drum,4 drum/carton,20kgs/carton(41*28*33.5cm)
Iron drum packing: 25 kg / drum (D: 30cm, H: 45cm)(0.032cbm)
- Delivery Time: 5-8 working days for Trial order; 8-15 working days for OEM order
- Payment Terms: T/T,Western Union,Ali Pay,Paypal;
- Supply Ability: 2000 Kilogram/Kilograms per Day



Product Specification

- Application: Daily Flavor, Industrial Flavor, Cherry Blossom Essence For Skin Care Making
- Color: Colourless Or Light Yellow
- Odor: With The Aroma Of Cherry Blossom Essence
- Sample: Freely Provided
- Form: Liquid Fragrance Concentrate/Liquid Fragrance Oil
- Material: Pure Natural Extracted Oil
- Type: Natural Fragrance
- Usage: Cherry Blossom Essence For Skin Care
- Highlight: **Cherry Blossom Floral Essential Oil, Skin Care Fragrance Floral Essential Oil, Skin Care Floral Essential Oil**



More Images





Our Product Introduction

for more products please visit us on fragrances-oil.com

Product Description

Product Description:

Cherry blossom fragrance is a fragrance with oriental charm, which combines the fresh floral fragrance of cherry blossoms and the elegant fruity fragrance, giving people a gentle, romantic and fresh sensory experience. As a symbol of spring, cherry blossoms exude a soft floral fragrance and are often used in various household, personal care and daily chemical products to add elegance and tranquility. Cherry blossom fragrance is suitable for use in daily life and can also bring consumers a pleasant sensory enjoyment.

Fragrance characteristics:

Fresh floral fragrance: The fragrance of cherry blossom fragrance comes from the natural fragrance of cherry blossoms, with a light floral fragrance and a fresh fruity fragrance. It is fresh and not pungent, creating a light and warm atmosphere.

Soft and elegant: Unlike some strong floral fragrances, cherry blossom fragrance is more delicate and soft, giving people a romantic and peaceful feeling, suitable for various environments and occasions.

Persistence: The fragrance is long-lasting and diffused evenly, which can bring a long-lasting sense of pleasure to the user's living space and daily necessities.

Features:

Natural and elegant: The fragrance of cherry blossom essence is fresh and natural, which can bring people a romantic and peaceful feeling. It is suitable for home, work and personal use.

Long-lasting freshness: The fragrance is stable and long-lasting, keeping the freshness for a long time, not easy to disappear, and bringing users a continuous pleasant experience.

Gentle and non-irritating: The fragrance of cherry blossom essence is soft, which is very suitable for people with sensitive skin, especially when used in personal care products, non-irritating and safe to use.

Versatility: It is suitable for a variety of products, whether it is personal care, home fragrance or cleaning products, it can play an excellent fragrance effect.

Ingredients and formulas:

The formula of cherry blossom essence usually includes:

Natural plant ingredients: such as cherry blossom extract, natural flower fragrance, etc., to ensure the natural and pure fragrance.

Synthetic fragrance: used to enhance the persistence and diffusion of fragrance, while ensuring that the fragrance is clearly layered.

Solvents and fixatives: To ensure the stability and uniformity of the fragrance, appropriate solvents and fixatives are usually added to the formula.



Technical Parameters:

Testing Items	Standard Requirements	Testing Result	Conclusion
Character	yellow liquid, with the aroma of Cherry Blossom Fragrance	Qualified	Confirmed
Density	0.9380-0.9500	0.9410	Confirmed
Refractive index (20°C)	1.4800-1.5000	1.4856	Confirmed
Solubility	The 1ml sample is soluble in 3ml volume fraction of 90% ethanol, a clear and transparent liquid	Qualified	Confirmed



Applications:

Home Fragrance:

Air Freshener: Cherry Blossom Fragrance is often used as a fragrance for air fresheners, bringing a warm and pleasant atmosphere to the room, especially suitable for areas such as bedrooms, bathrooms and living rooms.

Scented Candles: Cherry Blossom Fragrance is often used in scented candles. When lit, it can add soft light and fresh fragrance to the room to create a romantic atmosphere.

Room Spray: Suitable for use after home cleaning or on specific occasions to add a fresh and natural cherry blossom fragrance to the room.

Personal Care:

Bath Gel and Shampoo: Cherry Blossom Fragrance can be used in personal care products such as shower gel and shampoo, giving people a refreshing and comfortable bathing experience while bringing a light fragrance.

Skin Care Products: Such as face creams, body lotions, etc., cherry blossom fragrance can make skin care products emit a soft floral scent, bringing a sense of pleasure.

Perfume: Cherry Blossom Fragrance is a common ingredient in perfumes, suitable for creating a fresh and elegant female fragrance, suitable for daily wear.

Washing products:

Laundry detergent and softener: Sakura essence can bring delicate floral fragrance to clothes, making clothes emit the fragrance of cherry blossoms during the washing process, bringing a refreshing wearing experience.

Washing powder: Adding sakura essence to washing powder makes the clothes fresher and softer after washing.

Cleaning products:

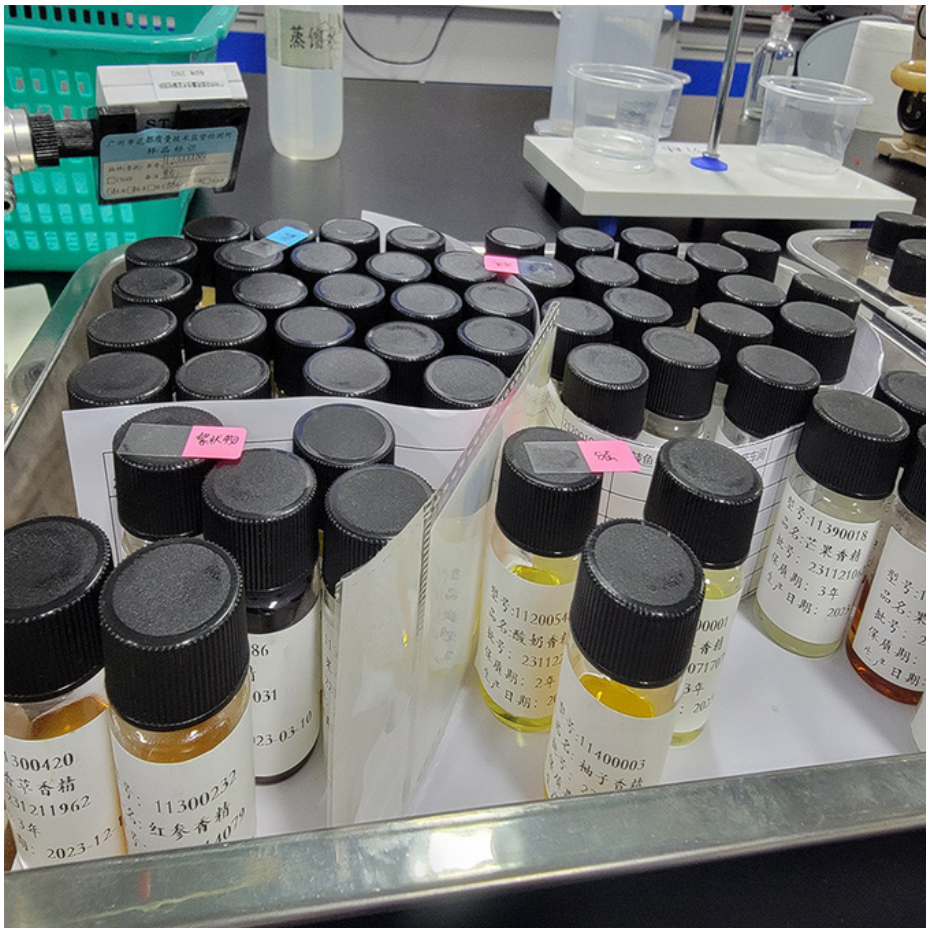
Floor cleaner: Adding sakura essence to floor cleaners and kitchen cleaners can not only clean the space, but also bring a pleasant aroma.

Disinfectant: Disinfectants with sakura essence can add a fresh breath during the cleaning process, making the environment fresher and more comfortable.



Support and Services:

Our Skin Care Fragrances are designed to provide a delightful sensory experience while also nourishing and protecting the skin. Our technical support team is available to assist with any questions or concerns regarding the use of our products. Additionally, we offer a range of services to support our customers, including formulation assistance, regulatory support, and product customization. Contact us to learn more about how we can help you create unique and effective skin care fragrances.



Packing and Shipping:

Product Packaging:

The Skin Care Fragrances product comes in a sleek, white box with the brand name and product name printed on it in bold letters. Inside the box, the fragrance bottle is securely placed in a foam insert to prevent any damage during shipping.

Shipping:

We offer free shipping for all Skin Care Fragrances orders within the United States. International shipping is also available at an additional cost. Orders are typically processed and shipped within 1-2 business days. Customers can expect to receive their order within 3-5 business days within the United States and 7-14 business days for international orders.



Guangzhou plant fragrance Co., Ltd



+86-13924190039



plan@662n.com



fragrances-oil.com

No. 1, Keyuan Road, Baiyun District, Guangzhou, Guangdong, 510540, China