



## Free Sample High Concentration Body Fragrance Strawberry Champagne Essence Oil For Perfume Making/Production

Our Product Introduction

### Basic Information

- Place of Origin: China
- Brand Name: Plant
- Certification: COA,MSDS,IFRA,CE,ISO
- Model Number: LDZ-PL10223
- Minimum Order Quantity: 1KGS/To Be Negotiated
- Price: 1-49 Kilograms \$20.00, To Be Negotiated
- Packaging Details: Carton Drum Packing :5kgs/drum,4 Drum/carton,20kgs/carton(41\*28\*33.5cm);Iron Drum Packing: 25 Kg/drum (D: 30cm, H: 45cm)(0.032cbm)
- Delivery Time: 3-5 Working Days For Trial Order; 5-10 Working Days For OEM Order
- Payment Terms: L/C,T/T,Western Union,MoneyGram
- Supply Ability: 2000 Kilogram/Kilograms Per Day



### Product Specification

for more products please visit us on [fragrances-oil.com](http://fragrances-oil.com)

## Free Sample High Concentration Body Fragrance Strawberry Champagne Essence Oil For Perfume Making/Production

Product Code: LDZ-PL10223

Strawberry Champagne Essence Oil is a premium, highly concentrated professional-grade formulation specifically engineered for fine perfume making and luxury cosmetic production. Unlike standard fragrance oils, it features a unique dual-action effervescent profile that captures both the sparkling, hyper-realistic pop of chilled champagne bubbles and the deep, sun-ripened sweetness of wild strawberries, ensuring the scent never turns syrupy or artificial.

The olfactory journey opens with this distinct, crisp carbonated burst, anchored by a sophisticated heart of delicate hyacinth, soft white florals, and a hint of tart red berries that adds remarkable modern depth. Finally, it settles into an elegant, skin-hugging base of clean white musk and subtle spun sugar, ensuring a well-rounded and long-lasting finish.

A major differentiator is its cosmetic-grade purity and skin-affinity formulation. It is skin-safe, alcohol-free, and meticulously stabilized with a high flashpoint, preventing discoloration in cold-process soaps and wax bases while maintaining an exceptional cold and hot scent throw. It blends seamlessly with perfumer's alcohol or carrier oils without separating. Delivering a perfect balance of flirtatious charm and refined luxury, it allows indie brands and large-scale manufacturers alike to craft high-end, romantic product collections that stand out in a crowded market.













5kgs/plastic bottle



LDZ-PL30967

Coconut & Vanilla Fragrance

Production Date: April 25,2026  
Production Batch No.: 260425529  
Shelf Life: 2 years  
Specifications: 5kg/drum  
Product Standard No.: GB/T22731 Daily Fragrance  
Net Weight: 5kg

Application: Daily Fragrance  
Usage: Add in appropriate amounts as needed in production  
Shake well before use, and use as soon as possible after opening  
Storage conditions: Store in a cool, dry, and wellventilated place, sealed

Crystallization may occur when stored in a low temperature environment. Please dissolve in a 50°C water bath and shake well before use.

Supplier: PLAN Fragrance Co., Ltd.

Address: No. 1, Xiyuan Road, Daluwan District, Guangzhou, Guangdong, 510540, China

Tel: 86-15084180322

Email: plan26@163.com



## Fragrance Profile:

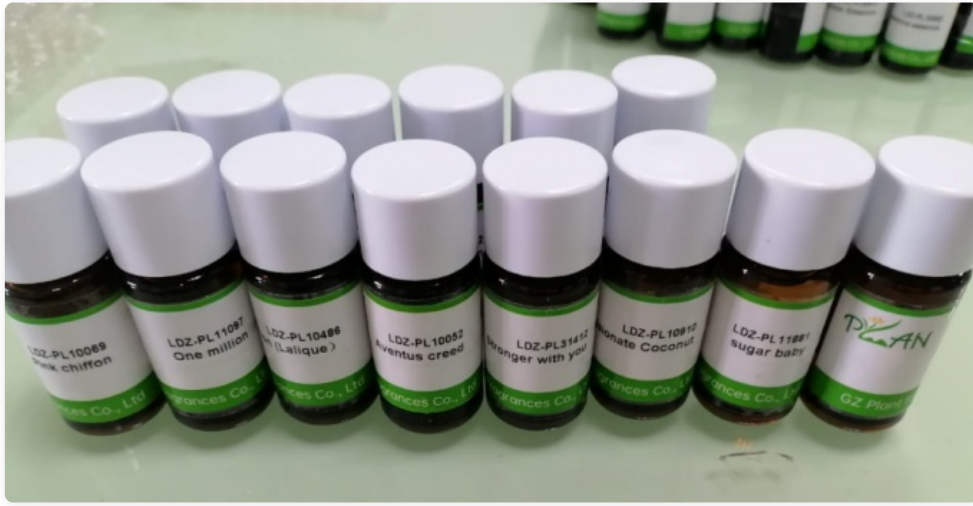
**Strawberry Champagne Essence Oil features a beautifully orchestrated three-tier olfactory pyramid, designed to evolve dynamically on the skin from a sparkling opening to a warm, sensual dry-down.**

Fragrance Notes	Description
Top Notes (Opening)	The fragrance opens with an immediate, head-turning burst of effervescent chilled champagne bubbles and the vibrant, juicy sweetness of freshly picked wild strawberries. This unique combination creates a crisp, carbonated, and uplifting introduction that feels instantly celebratory.
Middle Notes (Heart)	As the initial sparkle softens, the heart reveals a sophisticated floral-fruity blend. Delicate purple hyacinth and elegant white floral accords interlock with a tart splash of red raspberries, adding a modern, refreshing complexity that prevents the fruitiness from becoming cloying.
Base Notes (Foundation)	The scent matures into a rich, skin-hugging finish. A grounding foundation of clean white musk blends with a subtle hint of spun sugar cane. This warm base provides excellent fixation, ensuring the playful, luxurious aroma lingers beautifully for hours.



### Technical Specifications:

Parameter	Specification
Fragrance Notes	Strawberry Champagne Essence Oil
Appearance	Transparent to amber liquid
Relative Density	0.980–1.050 g/cm <sup>3</sup> @ 25°C
Refractive Index	1.470–1.490
Flash Point	>80°C (168°F)
Dosage	Fine Perfume :15% – 30% Body Mist:3% – 10% Lotion/Cream:0.3% – 1.5% Shampoo:0.2% – 1.0% Shower Gel:0.3% – 1.2% Soap:0.5% – 2.0% Candles:5% – 10% Reed Diffusers:10% – 25%
Diffusion Ability	Excellent aroma
Long-lasting Fragrance	8-12 hours (paper strip test)
Solubility	Soluble in ethanol and oils; insoluble in water
IFRA Compliance	Conforms to International Fragrance Association safety standards
Heat Resistance	Stable at 100°C with no noticeable discoloration or odor change
Lightfastness	Good (avoid long-term direct sunlight)
Evaporation Rate	Slow evaporation ensures smoother fragrance evolution







## Applications & Functions:

From a technical standpoint, this essence oil serves several critical performance functions in product manufacturing. First and foremost, it functions as a primary olfactive agent, delivering a highly concentrated, true-to-life aroma that does not fade during the heating phases of production. Because it is highly concentrated, it acts as a cost-efficient scenting agent, requiring a very low usage rate (typically 1–5%) to achieve a powerful fragrance payoff.

Mechanically, it is engineered with a high flashpoint, which functions as a safety and quality safeguard, preventing the fragrance from flashing off or burning out when poured into hot candle wax or soap bases. In cosmetic bases, it acts as an olfactory masking agent, successfully neutralizing the unpleasant chemical undertones of raw lotion bases or surfactants.

Finally, the formulation contains advanced aroma fixatives, which function to slow down the evaporation rate of the volatile top notes. This ensures excellent longevity on the skin and maintains a consistent "hot throw" in home fragrance products over time.

Strawberry Champagne Essence Oil is a highly versatile, commercial-grade raw material designed for seamless integration across multiple creative industries. Its primary application lies in fine perfumery, where its excellent solubility makes it perfect for formulating Eau de Parfum (EDP), Eau de Toilette (EDT), and alcohol-free rollerball perfume oils. In the personal care sector, its skin-safe formulation allows cosmetic chemists to scent premium body lotions, rich body butters, exfoliating scrubs, and moisturizing shower gels. Furthermore, its high stability makes it a favorite for hair care cosmetics, including scented hair mists and leave-in conditioners. Beyond topical use, this essence oil excels in home ambiance production; it is perfectly optimized for clean-burning soy or paraffin candles, wax melts, and high-performance reed diffusers. Its distinct, upscale fruity-floral profile makes it particularly successful for crafting limited-edition Valentine's Day collections, luxury bridal party favors, and youthful, romantic lifestyle branding lines looking to capture a celebratory aesthetic.

## Industrial Applications

Primary applications include:

**Attars and Concentrated Perfume Oils (CPO):** Ideal for alcohol-free, highly potent luxury oils

**Fine Fragrances:** Used in "Intense" or "Nuit" perfume versions requiring heavy sillage

**Premium Home Fragrancing:** Top-tier choice for Bakhoor and luxury incense production

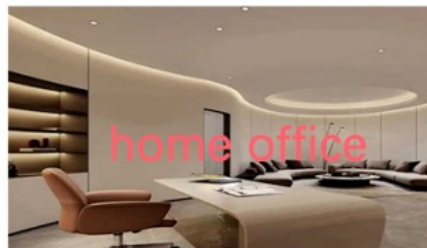
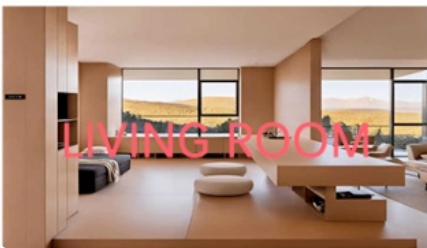
**Hospitality Sector:** Utilized in high-output nebulizers for hotel lobbies and boutiques

**Personal Care:** Popular in Beard Oils and Hair Mists for long-lasting sophisticated appeal

## Our Advantages

Our R&D team, consisting of PhDs and senior engineers, collaborates with universities to maintain product innovation and quality. We assist customers in improving product aroma, quality structure, and reducing production costs.

### applications



### applications



## 100% STRENGTH BRAND

Our products are strictly approved by a list of certifications, such as ISO22000, COA, MSDS, SGS, ISO9001, ISO22000, HACCP, IFRA, SPEC



### Support & Services

- OEM support for custom scents and classical flavors
- Product usage instructions and guidance
- Expert advice on fragrance selection
- Technical support for any issues or concerns
- Product customization services
- Assistance with regulatory compliance
- Training and education on fragrance formulation

### Packaging & Shipping

Pack Type	Quantity	Specification	Volume
Plastic Bottle	5 kgs	L41*W28*H33.5cm (5kg*4 bottle per carton)	0.038 cbm
Metal Barrel	25 kgs	D30*H45cm	0.032 cbm
Jerry Can	20-25 kgs	L29.5*D29.5*H41cm	0.33 cbm

**Production Time:** 3-5 days for trial orders, 5-10 days for bulk orders. We provide photo confirmation before shipping and offer multiple




shipping options including sea, air, truck, and express delivery.



Where there are fragrance, there are Plant flavor.

Contact us via WhatsApp: +86 139 2419 0039

 **Guangzhou plant fragrance Co., Ltd**

 +86-13924190039    [plan@662n.com](mailto:plan@662n.com)    [fragrances-oil.com](http://fragrances-oil.com)

No. 1, Keyuan Road, Baiyun District, Guangzhou, Guangdong, 510540, China